

Iceni Scan Tablet Kit - A Brilliant, Practical Solution for Imaging Gel Lifts

The Iceni Scan Tablet Kit is a cost effective solution for imaging surface detail from black gel lifts using standard imaging systems



Realise the simplicity of imaging Black Gel Lifters and exploit the potential of using this material for lifting latent, dust and surface detail.



Black Gel Lifters are known to be an incredibly sensitive lifting material and is used extensively to lift latent fingerprints and footwear – it may also be used to record surface detail and sensitive enough to detect indented writing. However, imaging the lifted detail has always been a challenge to investigators. With the Iceni Scan Tablet Kit, investigators now have the ability to capture that surface detail with flatbed scanners to AFIS systems, fingerprint capture systems and footwear systems.

With the gel lift placed on an Iceni Scan Tablet a vacuum is applied using the included vacuum pump. This vacuum holds the lift flat and firm with a small tolerance between the gel surface and depth within the perimeter frame. When placed upside down over the platen of a flatbed scanner there will be no contact with the glass, safeguarding the delicate nature of lifted evidence. Using the Iceni Scan Tablet is as simple as scanning a document but has powerful deployment implications.



Realise the simplicity of imaging Black Gel Lifters.....

Flatbed scanners are used by many AFIS and Footwear Systems because of the ease of importing images.

Iceni Forensic knew that the illumination properties of flatbed scanners would work very well on Black Gel Lifts and, indeed ESLA foils.

Having the ability to capture these materials straight to existing systems would provide a huge benefit in evidence capture capabilities and would be completely deployable.

However, placing the Gel Lift or Foil directly on the scanner glass both hides and destroys the lifted evidence so this resource for imaging surface detail wasn't appropriated.

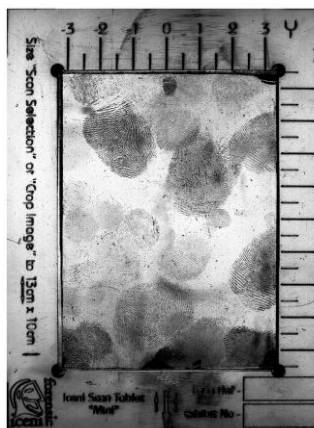
Well! With the Iceni Scan Tablet Kit you can!

When using the kit the Gel Lift or Foil is held flat and firm allowing you to place lifted evidence over your flatbed scanner, holding the surface away, by fractions of a millimetre, from the scanners glass platen.

The Iceni Scan Tablet Kit realises a cost effective resource for scanning Gel Lifts and ESLA foils straight to existing systems and is highly effective over traditional photographic methods.

.....and
ESLA Foils too!

"Simple to use, no imaging skills required"



"Scan straight to AFIS and Footwear systems"

A number of UK forces have deployed the Iceni Scan Tablet Kit within their footwear units. Some are deploying kits to area CSI to speed up the delivery of evidence to HQ units

Benefits of the Iceni Scan Tablet Kit

- CSI Deployable
- Efficient use of existing IT Resources
- Cost effective
- Accelerate evidence delivery
- Facilitates best practice
- Simple to use
- Use it on AFIS and Footwear Systems
- Very low maintenance
- Will also handle pre-cut ESLA Foils

